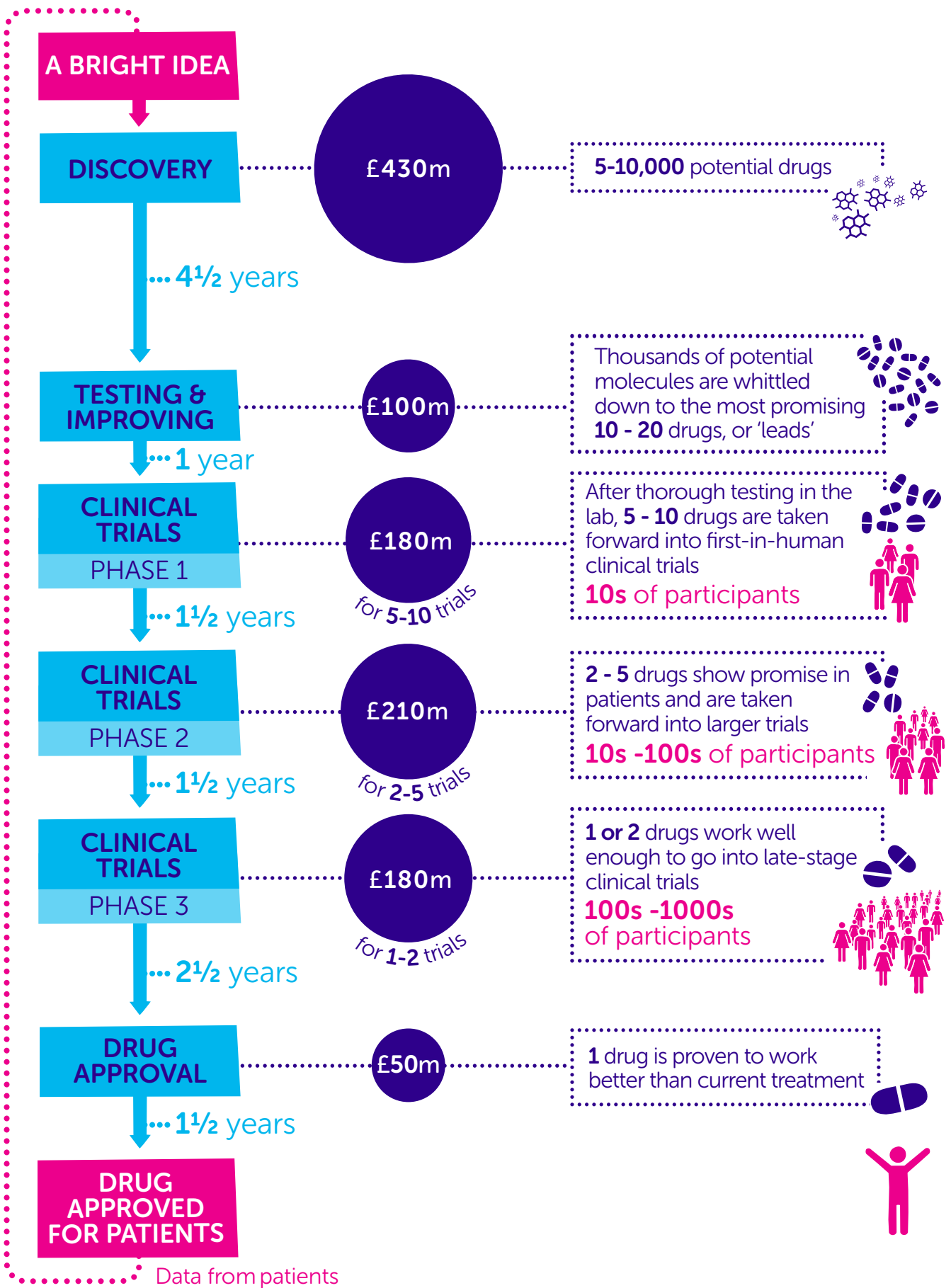


A NEW DRUG: HOW MUCH AND HOW LONG?



AROUND **£1,150M** AND **12½ YEARS**

Read more at: <http://bit.ly/cruk-pharma>

Figures based on data from ABPI, for the top 12 pharmaceutical companies. Development costs and times vary between R&D departments and diseases. Costs and times are based on averages.